



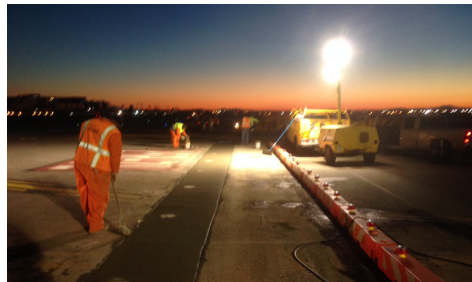
Los Angeles Airport - Los Angeles, USA

Permanent Concrete Protection



A Rapid cure concrete solution was required at the hold fast strip on the main runway at Los Angeles Airport (LAX). This concrete strip is 450 mm thick, and used with fast cure concrete. To provide a rapid cure of concrete solution and to also protect the concrete from all forms of attack.

The rapid cure concrete has to sufficiently cure to park a Boeing 747 on it in 3 days. Secondly, it has to be painted within 3 days as well.



ShieldCrete® SCP-743 treated the rapid cure concrete at time of concrete placement. It was reported that significantly less cracking was observed when compared to other concrete strips laid in past concrete pours.

Unlike past concrete pours, the paint survived and did not need to be replaced three times in the first few months as was the case with past concrete repairs.



Spray-Lock Concrete Protection products have a unique ability to fully penetrate and fill the concrete capillaries delivering permanent concrete protection from fuel spillages, oil, grease etc., which would otherwise permanently stain and degrade the concrete.

This allows the concrete to have contamination removed off the surface easily and remain looking like a clean concrete pad.

